

Volume 1, Issue 1

March 1, 2010



MILLSTREAM COMMONS  
210 WEST EIGHTH STREET  
NORTHFIELD, MN 55057 507-650-0141

Millstream Commons

# The Common Connection

---

End-of-winter greetings!

It sure has been a season of amazing snowfalls! Our wonderful maintenance team has done a superb job of moving the pretty white stuff out of our way which has been no small challenge. We even celebrated in late January with a "Snow Fun" day complete with live snowmen, snow toss games, festive snacks.

Last Friday, Millstream heated up with "Hawaii Day". Joyce and the kitchen crew created an exquisite fruit buffet that was almost too good to eat. The staff provided the entertainment at afternoon coffee with grass skirt dancers, island games and a sea shell guessing contest. It was a great way to escape what's becoming a long, cold winter.

Spring is on it's way but in the meantime isn't it funny how predictions of 40 degree days makes you want to roll down your windows!

Enjoy!

Kathy Olson

Executive Director



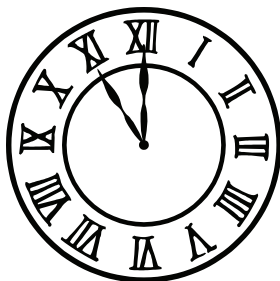
---

## 2009 Year End Giving

---

I'd like to thank those of you who chose to participate in our 3rd annual Year End Giving endeavor at the end of 2009. We had a special time together in December as we shared a few tears while reading the personal messages on the tree ornaments before displaying them on the tree. This effort will allow us to purchase large print "Songs of Faith" hymnals as well as creating a coffee center in The Connection. Together our total giving was \$715.00. We are very grateful!

---



*Remember:  
Daylights Savings  
Begins  
Sunday March 14th.  
Move your clocks ahead!*

## Call for Recipes!

---

Do you have some favorite recipes you'd like to share? We are always open to new menu ideas and perhaps you have a favorite dish we could feature on the Millstream menu! Bring us a copy of your recipes and our cooks will see if it can be altered for a large group. It's a perfect time to "think spring" and move to your springtime favorites.

Thank you!



## Eye Health Lecture Series

#2 in the series: Everything You Need To Know About Dry Eyes was held on Tuesday February 23rd from 6:00—7:00 pm. A big thank you to Dr. Dena McGree of River Valley Vision Center for the terrific information.

Stay tuned for the next lecture series coming soon!

## St. Patrick's Day

---

Mark your calendars for Monday March 15th!

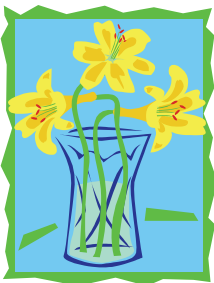
Cheri Albers will be here with her musical group to help us celebrate St. Patrick's Day in style!



**“Hop on in” to the Lily Pad gift shop!  
Now arriving: Spring and Easter items!**

## Three Cheers for Volunteers!

---



We are very fortunate to have volunteers here at Millstream every week! We have a wonderful group of St. Olaf volunteers who come Tuesday and Thursday evenings at 6:15 pm. We also have some High School students who come Tuesday and Fridays from 12:15—12:45 as part of their Service Learning class. During Monday night Bingo we have a variety of people who come in to help! Cheers to you all!

## Inside Story Headline

---



*Caption describing picture or graphic.*

---

*“To catch the reader's attention, place an interesting sentence or quote from the story here.”*

## Inside Story Headline

---

This story can fit 75-125 words.

Selecting pictures or graphics is an important part of adding content to your newsletter.

Think about your article and ask yourself if the picture supports or enhances the message you're trying to convey. Avoid selecting images that appear to be out of context.

Microsoft Publisher includes thousands of clip art images from which you can choose and import into your newsletter. There are also several tools you can use to draw shapes and symbols.

Once you have chosen an image, place it close to the article. Be sure to place the caption of the image near the image.



*Caption describing picture or graphic.*

# Organization

**MILLSTREAM COMMONS 210 WEST EIGHTH STREET  
NORTHFIELD, MN 55057 507-650-0141**

210 West Eighth Street  
Northfield, MN 55057

Phone: 507-650-0141  
Fax: 507-650-9170

Email: millstream@threelinks.org

***Distinctive Living. Discover the  
Difference***

**We're on the Web!**  
**example.microsoft.com**

*This would be a good place to insert a short paragraph about your organization. It might include the purpose of the organization, its mission, founding date, and a brief history. You could also include a brief list of the types of products, services, or programs your organization offers, the geographic area covered (for example, western U.S. or European markets), and a profile of the types of customers or members served.*

*It would also be useful to include a contact name for readers who want more information about the organization.*

## Back Page Story Headline

This story can fit 175-225 words.

If your newsletter is folded and mailed, this story will appear on the back. So, it's a good idea to make it easy to read at a glance.

A question and answer session is a good way to quickly capture the attention of readers. You can either compile questions that you've received since the last edition or you can summarize some generic questions that are frequently asked about your organization.

A listing of names and titles of managers in your organization is a good way to give your newsletter a personal touch. If your organization is small, you may want to list the names of all employees.

If you have any prices of standard products or services, you can include a listing of those here. You may want to refer your readers to

any other forms of communication that you've created for your organization.

You can also use this space to remind readers to mark their calendars for a regular event, such as a breakfast meeting for vendors every third Tuesday of the

month, or a biannual charity auction.

If space is available, this is a good place to insert a clip art image or some other graphic.



*Caption describing picture or graphic.*