

INDEPENDENT APARTMENTS

Created to allow our residents to be as independent as they wish, these apartments provide a variety of floor plans and amenities to meet individual needs. Each unit features spacious closets, individually controlled heating and cooling, dishwashers, washers and dryers. All two bedroom and select one bedroom units have fireplaces. Attached and detached garages are available on a first come basis.

Features include:

- Weekly light housekeeping
- Ten meals per month
- Exercise room
- Beauty/barber shop
- Sprinklers and alarms for fire safety
- All utilities except telephone
- General Maintenance of apartment
- Grounds keeping and snow removal
- Cable TV – Basic package
- High-speed Internet
- 24-Hour Staff available
- Community Area for activities and socialization
- Emergency call system
- Centrally located elevator
- Guest apartment
- Priority access to Three Links campus services, as available

Rates per Month:

One-bedroom (622 sf)	\$995
One-bedroom corner unit (668 sf)	\$1,075
Two-bedroom (972 sf)	\$1,195
Two-bedroom (1027 sf)	\$1,295
Two-bedroom (1118 sf)	\$1,450
Garages	\$50 detached/\$60 attached

See a la carte service menu for optional services and fees.

ASSISTED LIVING APARTMENTS

Created to provide assistance for those that need help with the tasks of daily living, staff is available 24 hours each day to provide supportive care to remain active and independent. The Assisted Living Apartments offer a variety of floor plans and amenities to meet these needs including individually controlled heating and cooling.

Your Villages of Lonsdale Assisted Living Apartment includes the following standard rent package:

- Private apartment with full kitchen and ample closet space
- Private bath with walk-in showers, grab bars and fold-down shower bench
- Individually-controlled heat and air conditioning
- Complimentary laundry facilities
- Spacious common area for activities and socialization
- Private dining room and community room for family gatherings
- On-site beauty/barber shop
- Easy access to on-site public library
- Controlled access entry system
- Weekly light housekeeping
- Emergency call system
- Three meals a day
- Tray delivery service 3 consecutive days per month
- General maintenance of apartment
- Grounds keeping and snow removal
- Exercise room
- Centrally located elevator
- All utilities except telephone
- Cable TV – Basic package
- High-speed Internet
- 24-hour awake staff
- Daily “I’m OK” checks at meal times
- Scheduled leisure activity programs
- Priority access to Three Links campus services, as available

ASSISTED LIVING APARTMENTS

Basic Pricing

One-bedroom (570 sf)	\$2,695
One-bedroom (609 sf)	\$2,795
One-bedroom (697 sf)	\$2,995
One-bedroom (760 sf)	\$3,095
Two-bedroom (869 sf)	\$3,195

*Second Occupant charge is \$500 which includes Standard Rent Package

In addition, the following Supportive Service packages are available or your supportive services may be customized from our a la carte menu.

Supportive Service package A \$500/month

- All of Standard Rent Package
- Health monitoring by Licensed Nurse
- Monthly Blood Pressure Check
- Weekly Medication set up
- Laundry - 2 loads per week
- 1x per week bath or shower assistance

Supportive Service package B \$1,000/month

- All of Standard Rent Package
- Health monitoring by Licensed Nurse
- Monthly Blood Pressure Check
- Medication Management/Administration
- Laundry – 2 loads per week
- 2x per week bath or shower assistance
- AM Dressing & Grooming (15 min)
- PM Dressing & Grooming (15 min)

Supportive Service package C \$1,500/month

- All of Standard Rent Package
- All of Supportive Service Package B
- Regularly scheduled toileting assistance of one aide (minimal incontinence assistance included) up to 6 times per 24 hours
- Regularly scheduled transfer assistance of one aide up to 6 times per 24 hours

See a la carte Service Attachment to customize supportive services

MEMORY SUITES

This self-contained, community-within-a-community, features a specialized program designed to stimulate and energize residents with Alzheimer's disease or other memory disorders. A highly skilled staff provides 24 hour care.

Features of the Suites include:

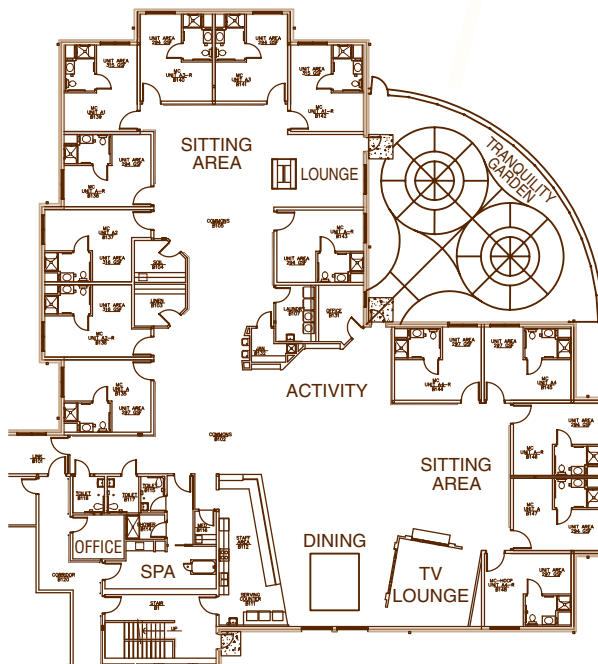
- Individualized service plan
- Family style dining
- Weekly linen and laundry service
- Weekly housekeeping
- Private bedrooms with sitting areas
- Private bathrooms with shower and bench
- Spa with therapy bath
- Spacious common areas
- Activity programs
- Enclosed exterior courtyard with walking paths
- Medication assistance

Pricing:

All-inclusive rate of **\$175** per day

Services include: 24 hour supervision by specially trained staff, RN on-site 40 hours per week, three meals a day, meal assistance, bathing and toileting assistance, dressing and grooming assistance, oral hygiene care, mobility and transferring assistance, medication monitoring and dispensing.

Prior to moving into the Memory Suites, a Registered Nurse will complete a personalized health assessment to determine care needs of each resident. On-going periodic health assessments will be completed throughout the resident's stay to insure that appropriate care is provided.



A LA CARTE SERVICES

Health Services Fee Schedule:

1. Skilled Nursing Services. \$18/15 minutes
2. Injections \$15/injection
3. Insulin – arrange with RN \$120/month minimum
4. Personal Care Assistance \$8/15 minutes
5. Assistance with bathing \$15/shower
6. Assistance with bathing \$20/spa
7. Weekly Med Set-Up See fee schedule below
8. Rehabilitation services arranged through therapy service provider
9. Escorts (in building) \$3/trip; \$6/roundtrip
10. Laundry \$8 per load
11. Eye Surgery Management \$400

Medication Management Fee Schedule:

MEDICATIONS	Simple Four (4) or Less Medications	Complex Five (5) or More Medications
Medication Set-up Only (weekly) Self Administration	Med I: \$160	Med II: \$210
Medication Management One or Two Passes per Day	Med III: \$325	Med IV: \$400
Medication Management Three or more Passes per Day	Med V: \$425	Med VI: \$500
Medication Reminders Phone contact only & daily visual check	\$225	\$225

Miscellaneous Services:

1. Housekeeping \$10/15 minutes
2. Maintenance \$10/15 minutes
3. Guest Meals . . . Breakfast \$4/Noon Dinner \$8/Supper \$6.50/Holidays \$15
4. Tray delivery \$4/meal
5. Second Occupant charge. . . . \$500/month (includes standard rent package)
6. Replacement key charge. \$10 mailbox key, \$25 apartment key
7. Replace Emergency response pendant \$150
8. Beauty / Barber Shop. According to shop fees
9. Catering Services arrange with Manager

* All prices are subject to change.